

# Natural Hazards Engineering Research Infrastructure (NHERI)

## NHERI-Network Coordination Office **NHERI-NCO**

### Lessons learned: Application to NHERI Experimental Facilities

---

May 2, 2018

# Why are we here?

- Build the learning culture through sharing failures and lessons
- Capturing and sharing lessons doesn't have to be complicated

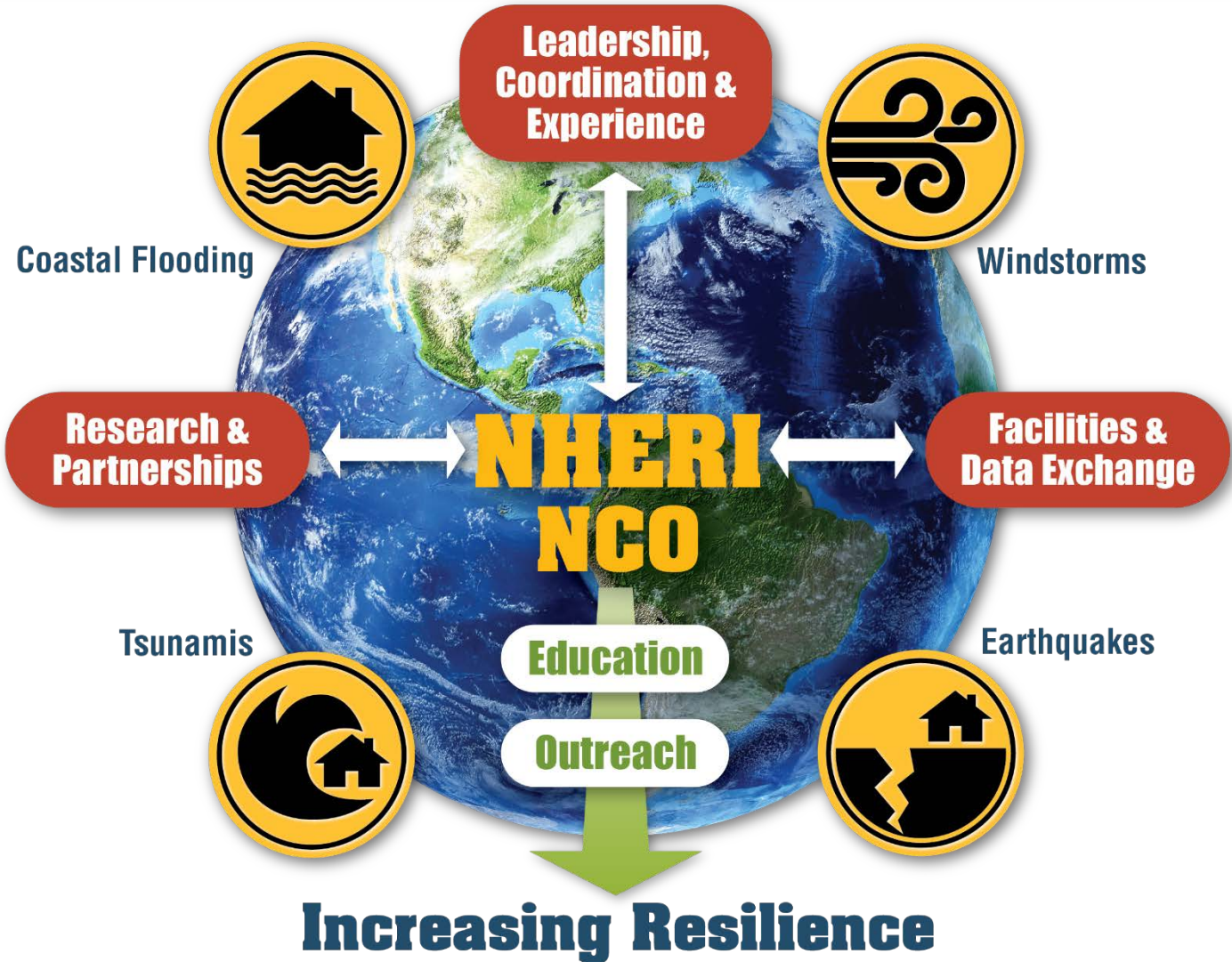
# Session agenda

- NHERI overview and central scheduling lessons learned
- Session panel introductions
- UCSD facility overview and lessons learned
- FIU facility overview and lessons learned
- OSU overview and lessons learned
- Hands on: discuss projects and lessons learned in groups
- Audience sharing time!
- Q & A

# Natural Hazards Engineering Research Infrastructure (NHERI)

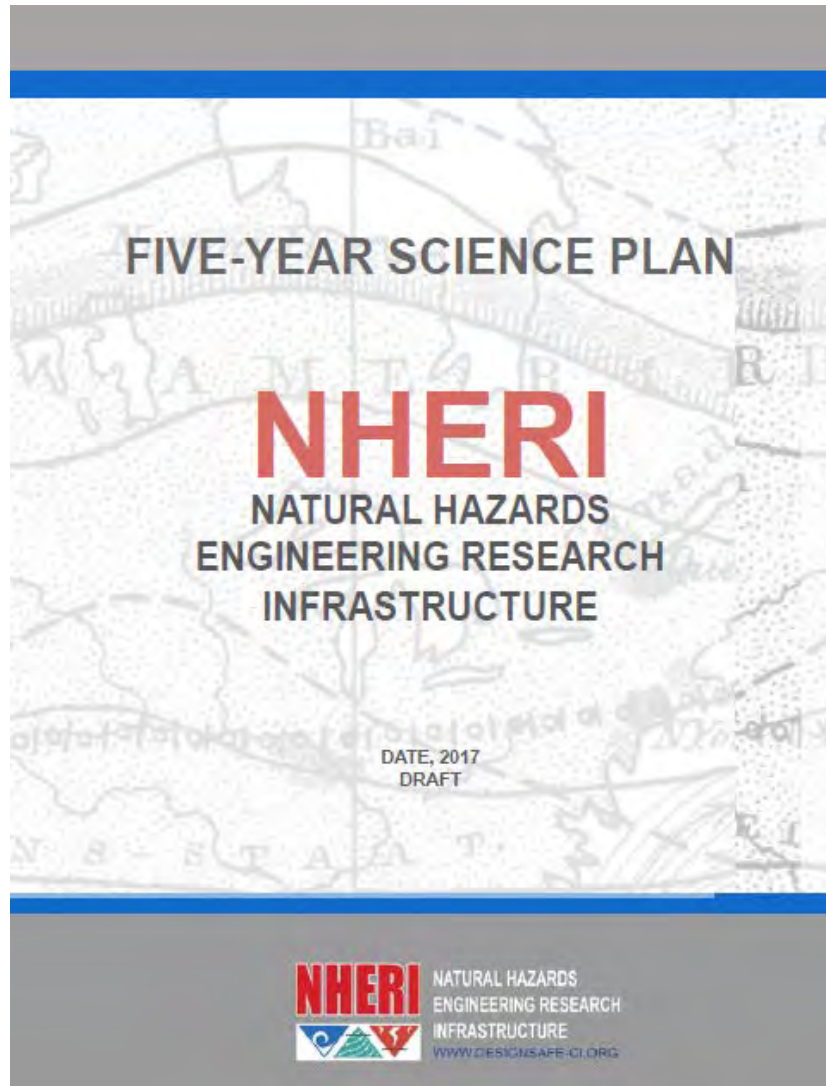


# NHERI Community





# NHERI Science Plan



Developed by Science Plan Task Group:

- Academia
- Early Career Professional
- Lifeline Infrastructure
- NHERI Investigators
- Practitioners
- Social Scientist

# NHERI and NIED/E-Defense Research Collaboration

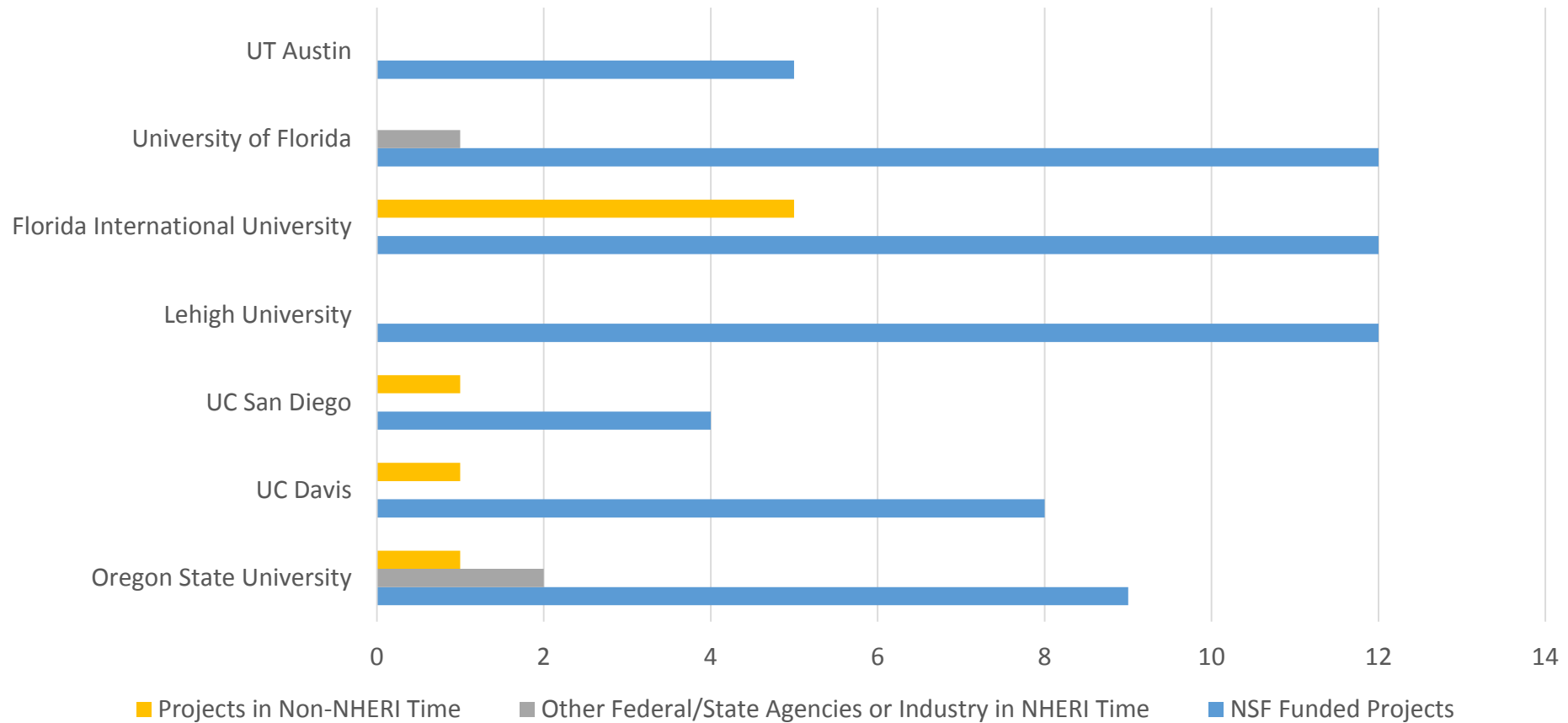
- Elements:
- Access to Facilities
  - Testing Techniques
  - Condition Assessment
  - Post-disaster data collection
- Research Coordination Program
- Data Exchanges and Computational Simulation
- Educational and Outreach Activities



*At E-Defense, shake table tests were performed on a 5-story full scale steel moment frame building isolated with triple pendulum bearings. The isolation system consisted of 9 bearings, one beneath each column of the building.*

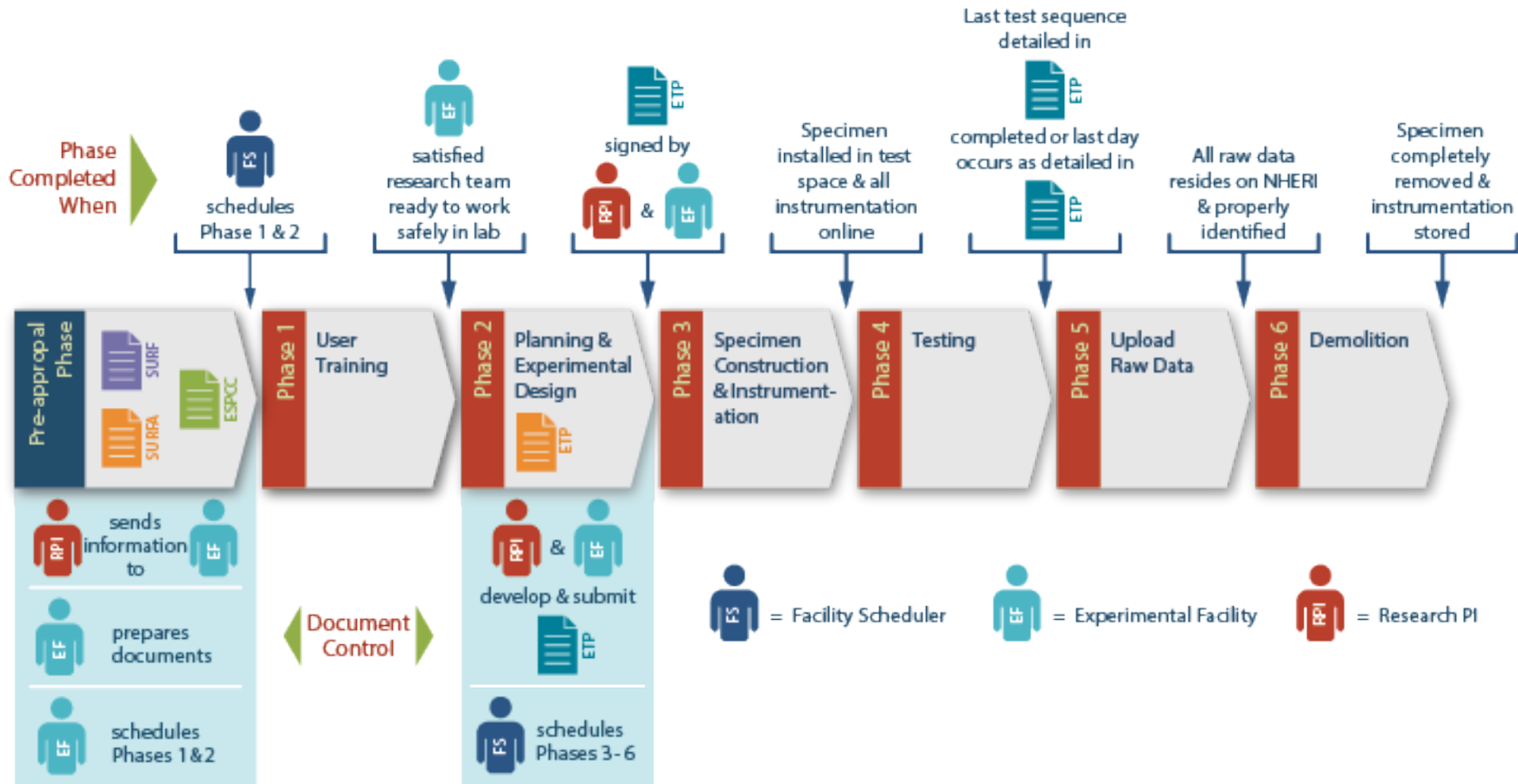
# Projects at NHERI

NHERI Projects for FY 2017





# Central Scheduling at NHERI



# Lessons Learned from Central Scheduling

- Don't be afraid to share failures and ask for help
- Simpler is better!
- Talk to the doers and listen to their ideas
- Engage the team

# NHERI EF Manager panel



Darren McKay

University of California at San Diego



Natural Hazards Engineering Research Infrastructure



Dr. Maryam Refan

Florida International University



Florida International University



Dr. Pedro Lomonaco

Oregon State University



Natural Hazards Engineering Research Infrastructure